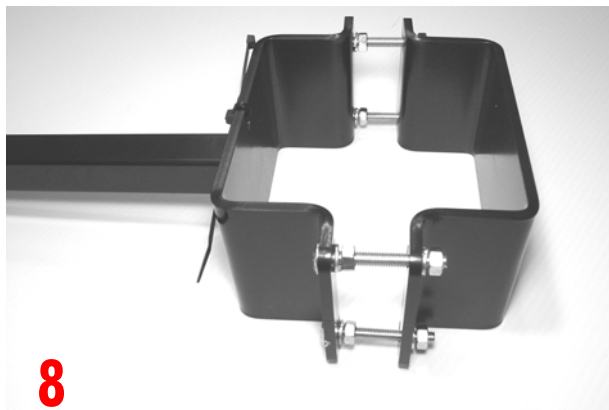
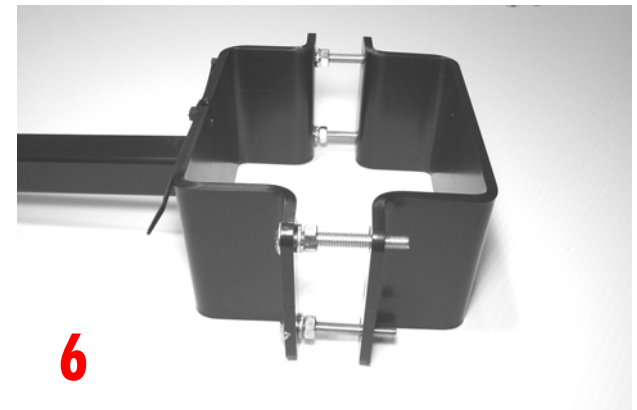
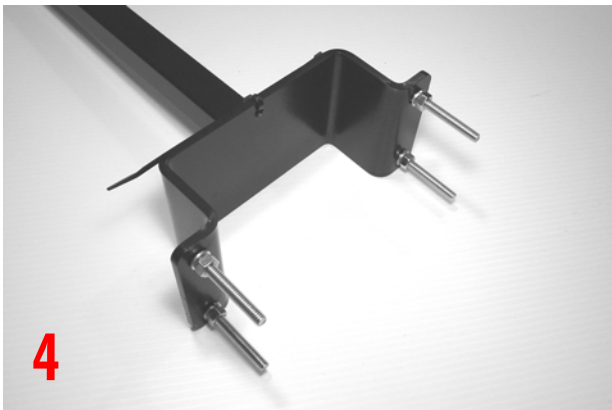
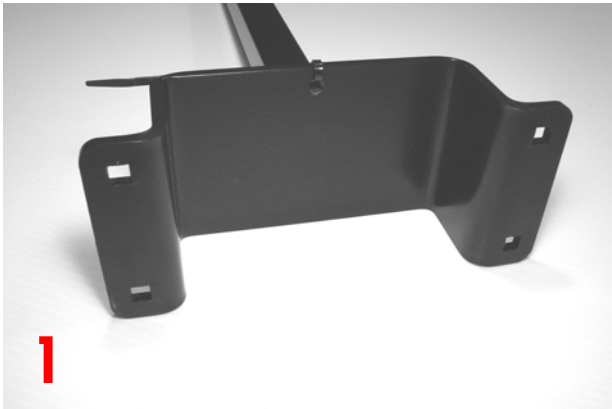


# Assembly Instructions for GIANT brackets



1. Lay arm assembly on flat surface
2. Slip 5/16" carriage bolt through square hole, add washer+ nut
3. Hand tighten nut
4. Repeat for remaining bolt holes
5. Place arm assembly against pole, slip opposing arm assembly or baseplate over bolts
6. Add lock washers + nuts, hand tighten
7. Tighten outer nuts first
8. Tighten inner nuts last